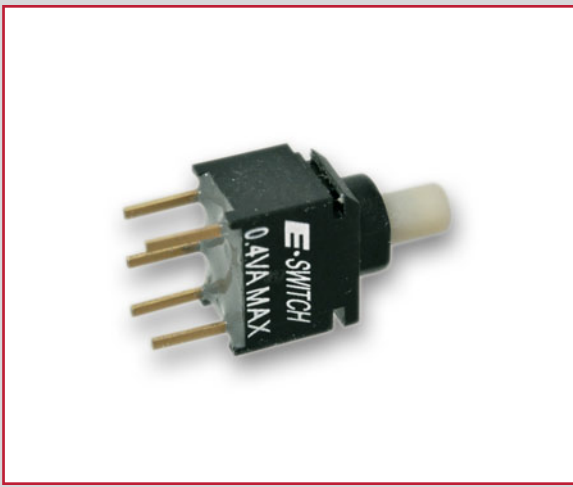
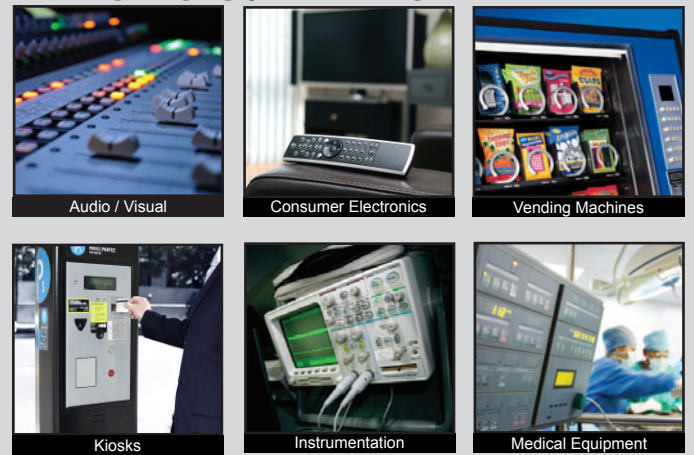


# 800U SERIES PUSHBUTTON SWITCH

ANTI-VANDAL SWITCHES  
 DETECTOR SWITCHES  
 DIP SWITCHES  
 KEYLOCK SWITCHES  
 NAVIGATION SWITCHES  
**PUSHBUTTON SWITCHES**  
 ROCKER SWITCHES  
 ROTARY SWITCHES  
 SLIDE SWITCHES  
 SNAP ACTION SWITCHES  
 TACTILE SWITCHES  
 TOGGLE SWITCHES  
 CAP OPTIONS



## APPLICATIONS / MARKETS



**RoHS**

## SPECIFICATIONS

**Electrical Rating:** 0.4VA @ 20V Max (AC or DC)  
**Mechanical Life:** 40,000 Cycles  
**Electrical Life:** 6,000 Cycles  
**Contact Resistance:** 100mΩ initial  
**Insulation Resistance:** 500 MΩ Min.  
**Dielectric Strength:** 500VAC  
**Operating/Storage Temperature:** -30°C to 85°C  
**Travel:** 1.0mm  
**Circuit Function:** SPDT, DPDT  
**Actuation Force:** 250 gf

## FEATURES & BENEFITS

- Ultra-miniature in size
- IP67 rated
- Multiple termination options
- Multiple body colors
- Single or double pole

## PART NUMBER CONFIGURATOR

Series	Circuit	Function	Actuator	Bushing	Terminal	Contact Material	Seal	Cap	Color
<input type="checkbox"/> <input type="checkbox"/> <input type="checkbox"/> <input type="checkbox"/> 800U	<input type="checkbox"/> <input type="checkbox"/> SP - Single Pole DP - Double Pole	<input type="checkbox"/> 8 - ON - (ON)*	<input type="checkbox"/> P1 - 3.30 High	<input type="checkbox"/> <input type="checkbox"/> A1 - 1.6 High	<input type="checkbox"/> <input type="checkbox"/> M2 - PC thru-hole M6 - Right Angle, PC thru-hole M7 - Vertical right angle, PC thru-hole	<input type="checkbox"/> R - Gold	<input type="checkbox"/> E - Epoxy	<input type="checkbox"/> <input type="checkbox"/> R1 - 4.0 dia. round	<input type="checkbox"/> BLK - Black RED - Red WHT - White

\* ( ) denotes momentary

*Specifications subject to change without notice*



**E-SWITCH®**

www.e-switch.com

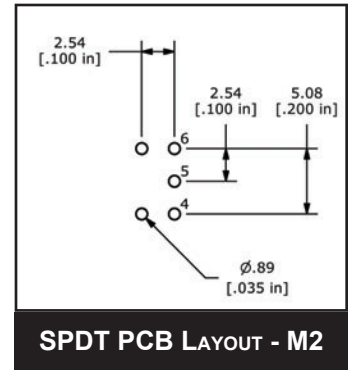
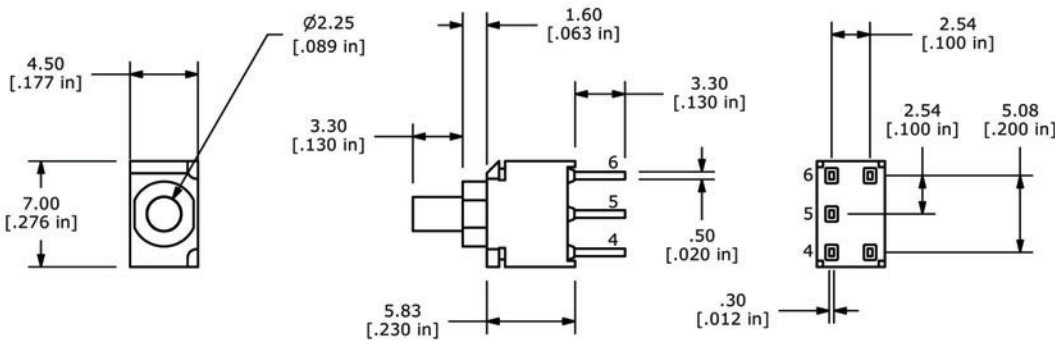
800.867.2717

2

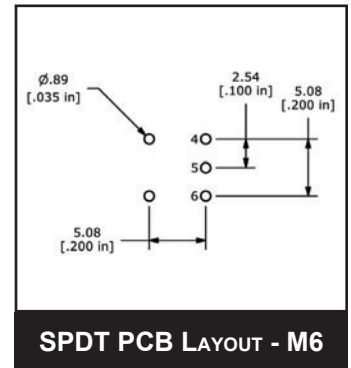
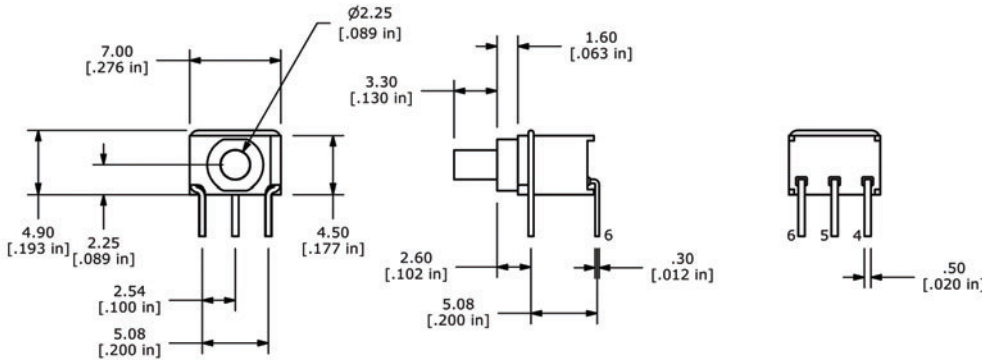
# 800U SERIES PUSHBUTTON SWITCH

## SPDT DIMENSIONS

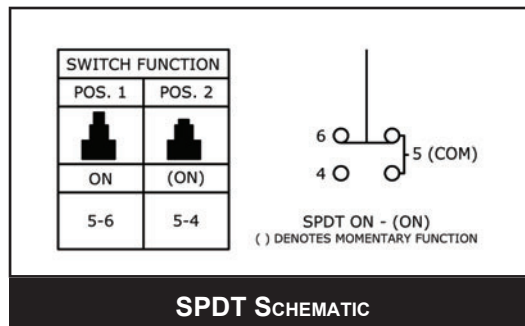
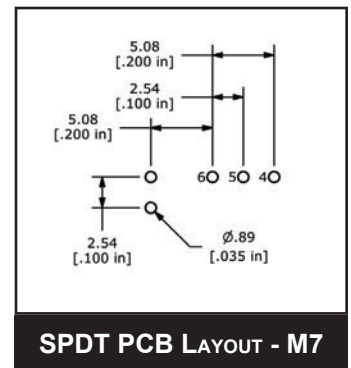
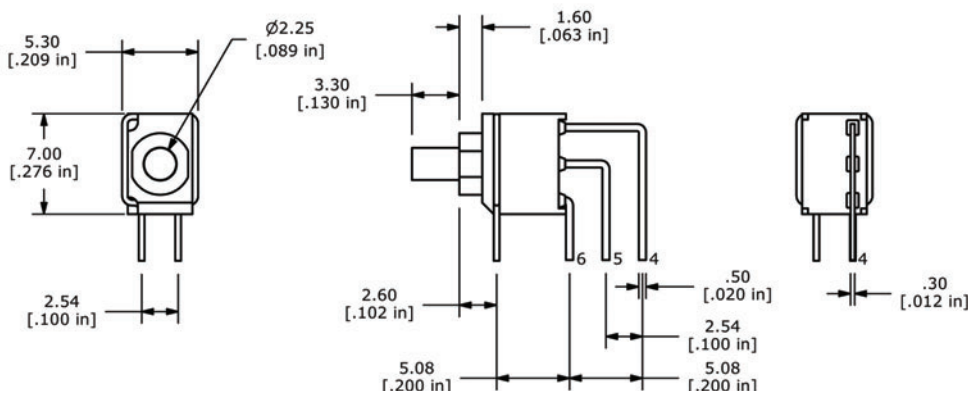
### M2 Termination



### M6 Termination



### M7 Termination



SPDT SCHEMATIC

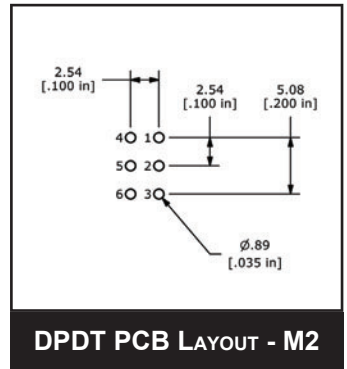
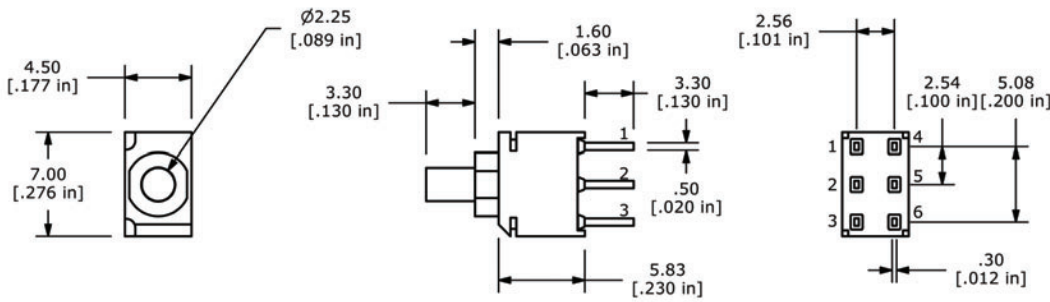


ANTI-VANDAL SWITCHES  
DETECTOR SWITCHES  
DIP SWITCHES  
KEYLOCK SWITCHES  
NAVIGATION SWITCHES  
PUSHBUTTON SWITCHES  
ROCKER SWITCHES  
ROTARY SWITCHES  
SLIDE SWITCHES  
SNAP ACTION SWITCHES  
TACTILE SWITCHES  
TOGGLE SWITCHES  
CAP OPTIONS

# 800U SERIES PUSHBUTTON SWITCH

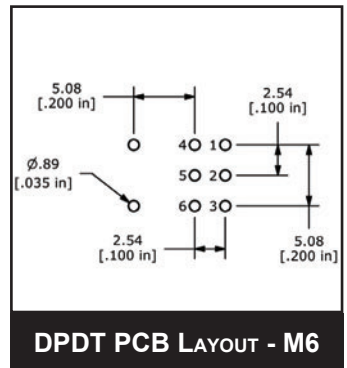
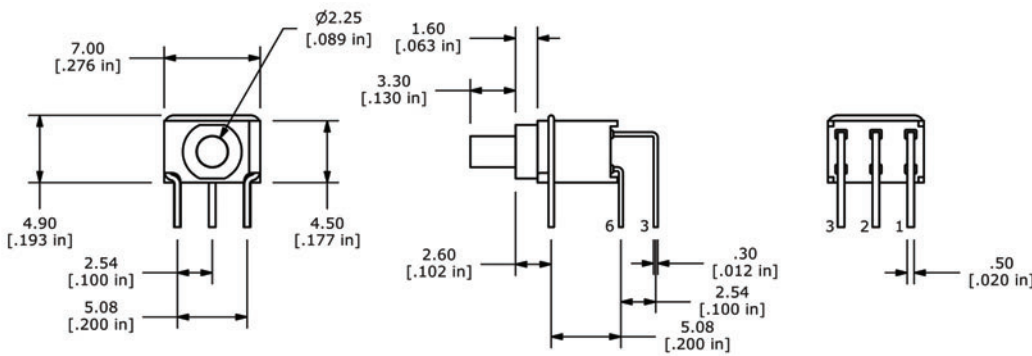
## DPDT DIMENSIONS

### M2 Termination



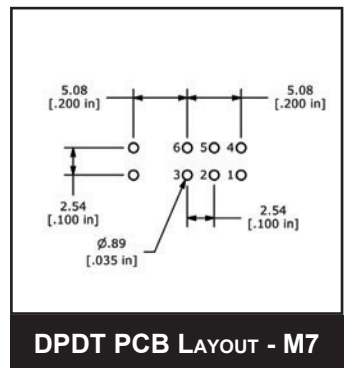
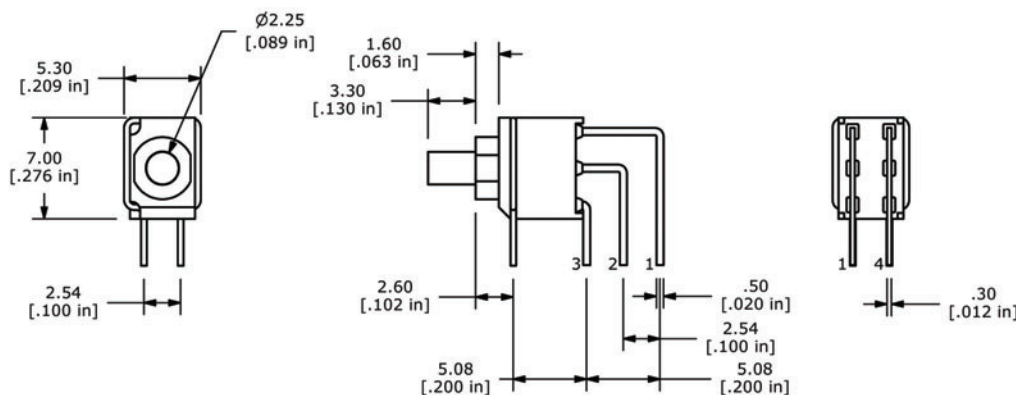
DPDT PCB LAYOUT - M2

### M6 Termination

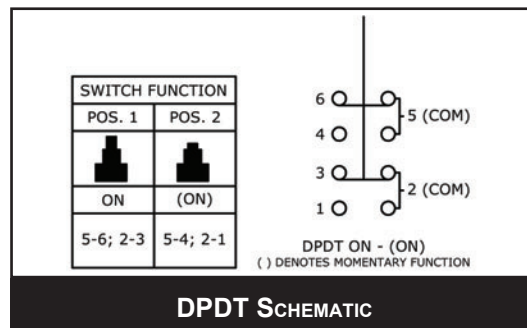


DPDT PCB LAYOUT - M6

### M7 Termination



DPDT PCB LAYOUT - M7



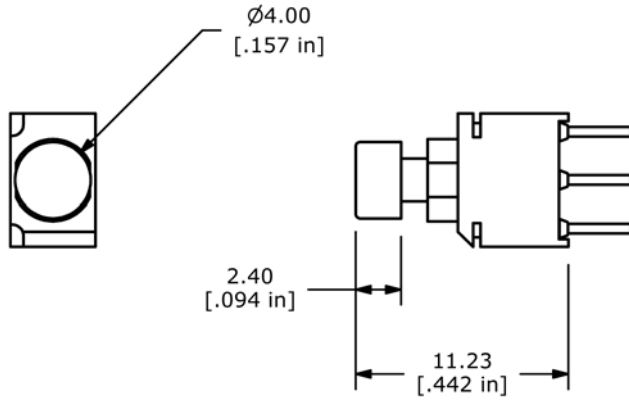
DPDT SCHEMATIC



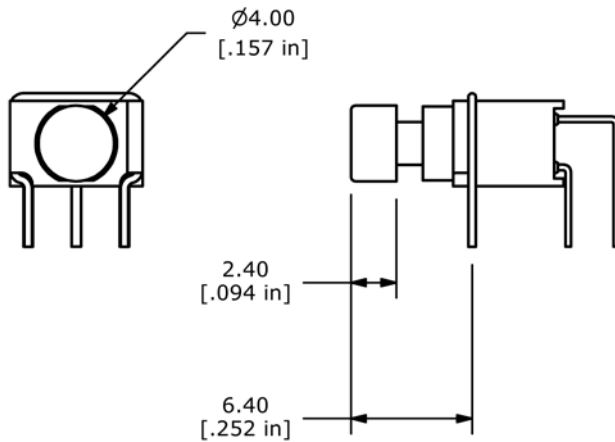
## BUTTON POSITIONING

For specifications, please refer to the dimensions on previous pages.

### M2 Button



### M6 Button



### M7 Button

