

## HB-2X2

Industry's standard 50 x 50 mm  
2X2 footprint for up to 5050 size  
LED packages

LEDiL's HB optics are designed for efficient and high performance industrial lighting. The HB-2X2 product family includes the widely used spot, medium and wide light distributions, as well as narrow oval shaped beams perfect for hallway and high shelf lighting.



## NEW

## HB-2X2-ON

Narrow and oval shaped beam  
ideal for aisle and shelf lighting in  
industrial applications.

### FEATURES

- About 50 % narrower beam along the aisle than with HB-2X2-O
- Sharp cutoff in longitudinal direction for reduced glare

### TYPICAL APPLICATIONS

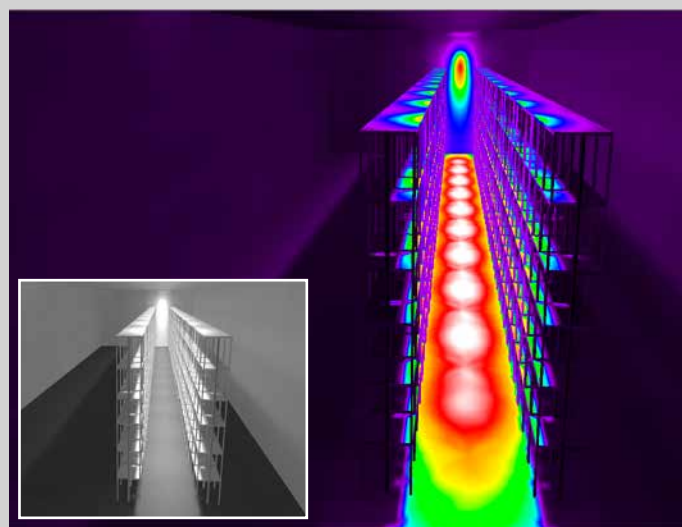
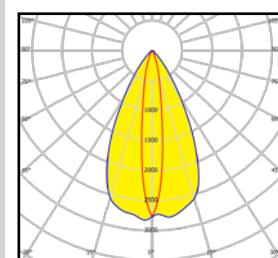
- Industrial and warehouse lighting
- Highbay applications

### DESIGN EXAMPLE

Application: Warehouse shelf and aisle lighting

Mounting height: 9 m  
Luminaire pitch: 4,5 m  
Aisle width: 2 m

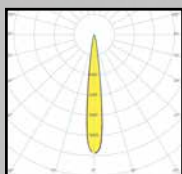
Luminous flux (Luminaire): 4 421 lm  
Power (Luminaire): 36 W  
UGR at 1,2 m height: <22



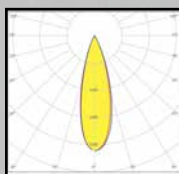
### COMPATIBILITY

- Compatible with up to 5050 size LED packages

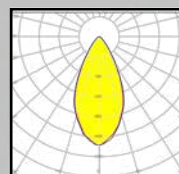
## Highbay lighting



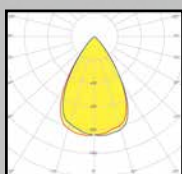
**HB-2X2-RS**  
D: 50 x 50 mm  
H: 10 mm  
Typ. FWHM: 10°  
Typ. eff: 94%



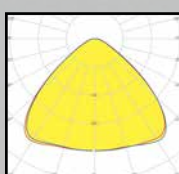
**HB-2X2-M**  
D: 50 x 50 mm  
H: 8,5 mm  
Typ. FWHM: 25°  
Typ. eff: 94%



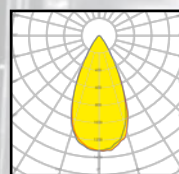
**HB-2X2-W**  
D: 50 x 50 mm  
H: 8,5 mm  
Typ. FWHM: 51°  
Typ. eff: 92%



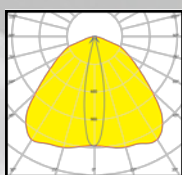
**HB-2X2-WW**  
D: 50 x 50 mm  
H: 8,5 mm  
Typ. FWHM: 10°  
Typ. eff: 91%



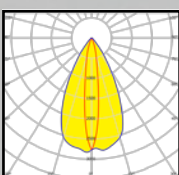
**HB-2X2-WWW**  
D: 50 x 50 mm  
H: 8,5 mm  
Typ. FWHM: 98°  
Typ. eff: 94%



**HB-2X2-RW**  
D: 50 x 50 mm  
H: 8,5 mm  
Typ. FWHM: 19°+117°  
Typ. eff: 91%



**HB-2X2-O**  
D: 50 x 50 mm  
H: 10,6 mm  
Typ. FWHM: 10°  
Typ. eff: 94%



**NEW**  
**HB-2X2-ON**  
D: 50 x 50 mm  
H: 10 mm  
Typ. FWHM: 10°  
Typ. eff: 90%

### ORDERING INFORMATION

C15925\_HB-2X2-ON

Consult [www.ledil.com](http://www.ledil.com) for ordering codes and latest product specifications, which may vary by LED.